

# Permanent Land Protection & Pinelands Conservation Fund Priorities Update

---

Policy & Implementation Committee  
October 27, 2023

# Concept Development

## Initiate discussion of

- PCF project funding structure changes
- 20 Acquisition Target Area changes
- Evaluation criteria changes

## P & I Committee

- Consider changes now
- Review & authorize in January

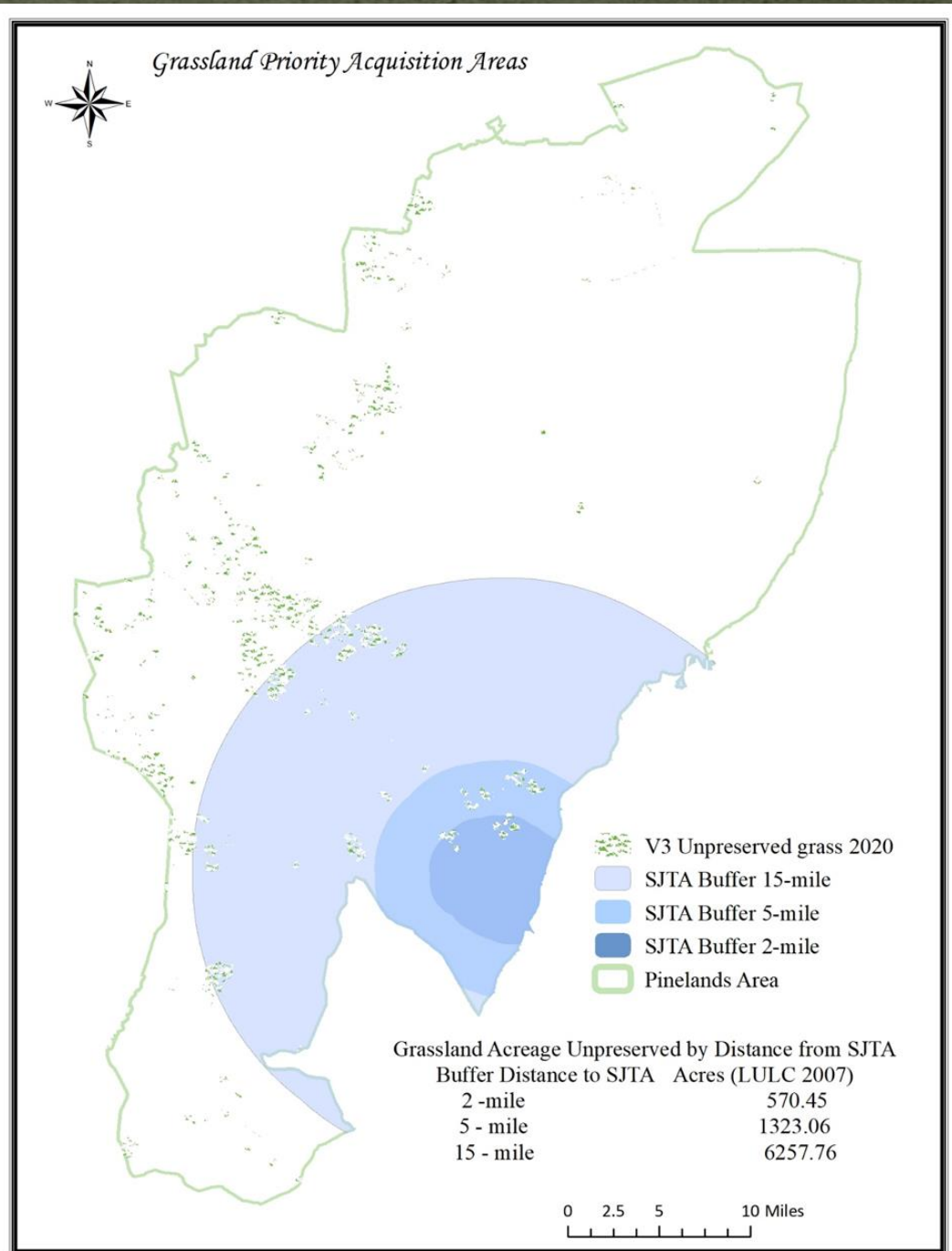
# Background

- Permanent land protection:
  - 51% of Pinelands Area
- 20 Planning & Section 502 Acquisition Target Areas
  - All appropriated Federal funding for Section 502 areas expended
  - Rely on PCF to achieve Permanent Land Protection goals (\$9.5 M/8,971 acres preserved to date)
- Additional \$3 M funding added to PCF through SJTA MOA 2019-2024
- PCF acquisition priorities revised in 2021, but few projects

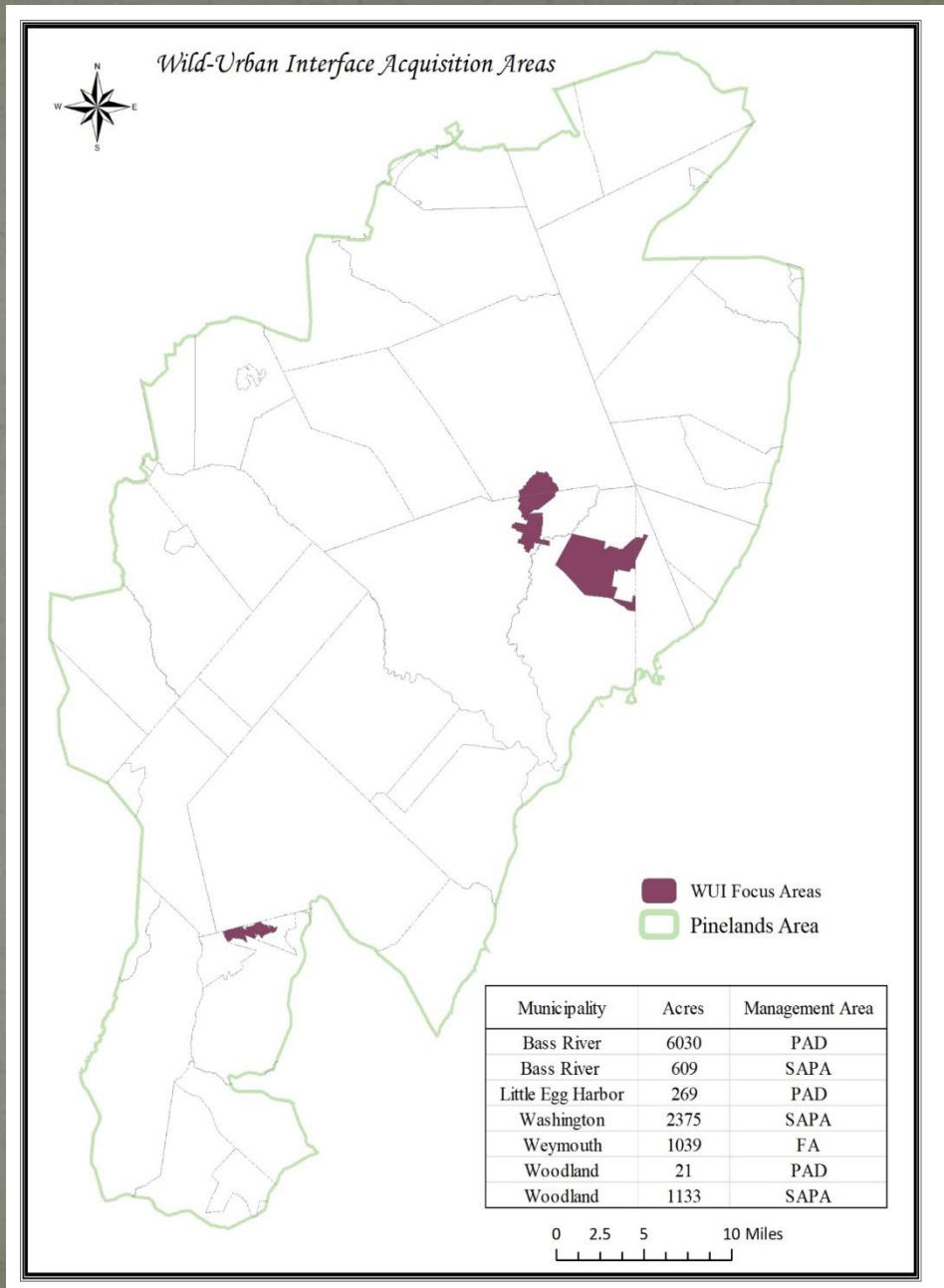
# Land Acquisition Priorities -2021

- Grassland habitats
- Impacts of climate change
  - Fire hazard
  - Flood hazard
  - Carbon sequestration
- “Traditional” acquisitions
  - 502 Fund Areas
  - Target Areas

# Grassland Focus Area

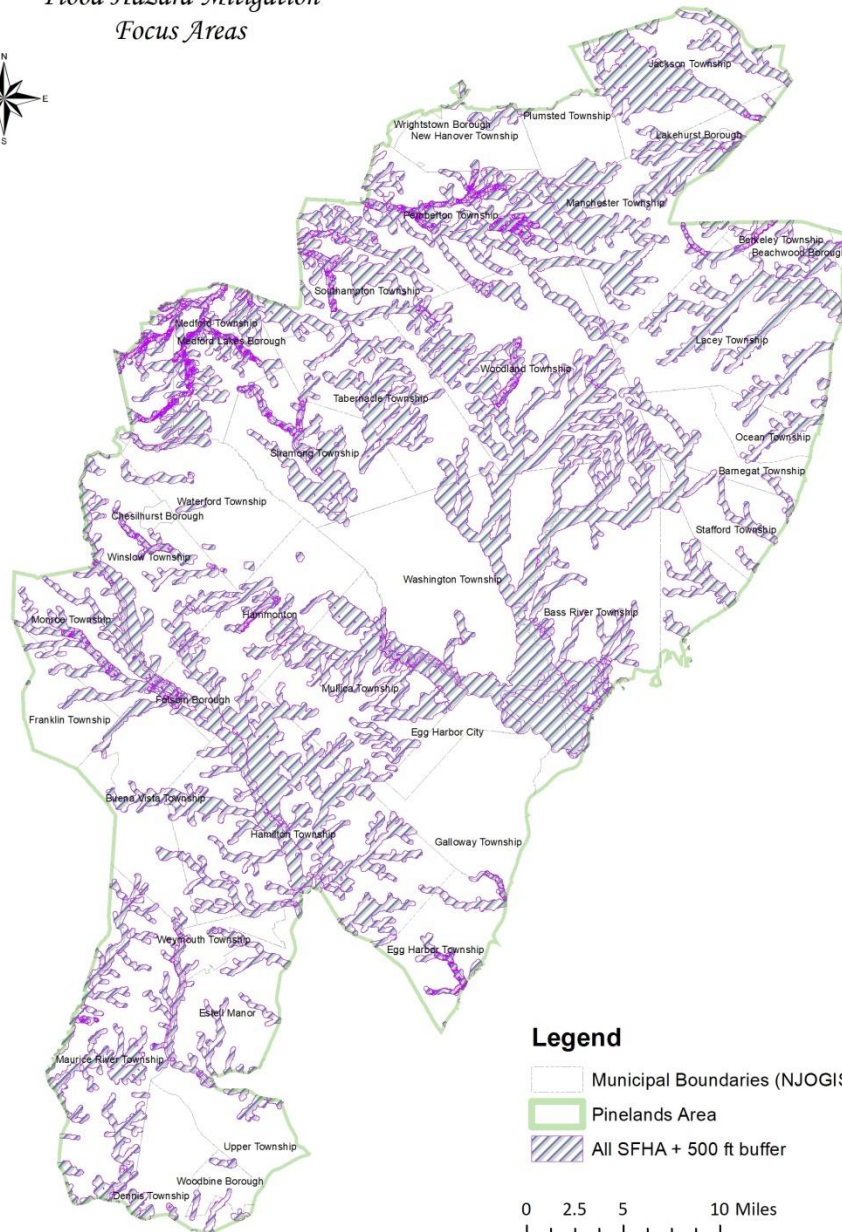


# Wild-Urban Interface Focus Area



# Flood Hazard Focus Area

## Flood Hazard Mitigation Focus Areas



# Project Evaluation Matrix

Factor	Low (1)	Medium (3)	High (5)
Location: Is the project in PCF focus area	In RGA, Town, Village or Rural Development Area AND none of the designated focus areas	In designated focus areas and PAD, SAPA, APA or Forest Area	Within a five-mile radius of SJTA and inside the State Pinelands Area
T&E Habitats:	No state/federal T&E habitat per NJDEP Landscape Model AND no NJPC and ENSP sightings	T&E habitat exists based upon NJDEP Landscape model and/or NJPC and ENSP sightings	Grassland habitat exists based upon NJDEP Landscape model and/or NJPC and ENSP sightings
Size:	Less than 50 acres	Between 50 and 100 acres	100 acres or more; add 3 additional points if greater than 500 acres
Contiguity:	Greater than one mile from preserved habitat or open space	Less than one mile from known grassland T&E habitats but not contiguous	Contiguous with preserved habitat or open space
Partner Contribution:	67.7% of acquisition costs	At least 75% acquisition costs	Greater than 75% acquisition costs
Long-Term Maintenance Capability:	No monitoring or maintenance plan/ no identified land steward	Proposed Monitoring and maintenance plan; Not previously implemented	Established Monitoring and maintenance program / Gov't. agency or NGO is prepared to manage land
Climate Change Mitigation:	Flood hazard mitigation	Wildfire Management	Carbon Sequestration/ Storage
Purpose:	Historic Preservation	Open Space	T & E or Climate Change

Extra points for carbon sequestration involving Atlantic cedar swamps.



# PCF Changes

## P & I Committee input

- Acquisition target areas?
- PCF project priorities?

## Staff recommendations

- Add PCF criteria for location in or adjacent to overburdened communities
- Add points for projects in areas highlighted by management area boundary analysis (from Climate Committee)

## Return to P & I in January 2024

- Climate Committee targets from December meeting
- Maps
- Priority matrix

# Funding Structure Changes

- Enhance stewardship success
  - Increase traditional 33% PCF match for projects with specific stewardship plans
  - Allow partner to set aside funds for stewardship
  - No change in funding for other projects
- Build a better grant proposal (future ATB?)
  - Identify sites
  - Partners
  - Projects
  - Costs
  - Benefits

# Reasons for Changes to Target Planning Areas

- Some Planning Areas are more than 50% preserved, contain significant areas of development and/or were not drawn to follow property lines ([map](#))
- Better alignment with NJDEP acquisition goals for climate & environmental justice ([map](#))
- Climate Committee recommendations from management area boundary analysis (December)

# Acquisition Target Planning Areas

Goals to be  
achieved

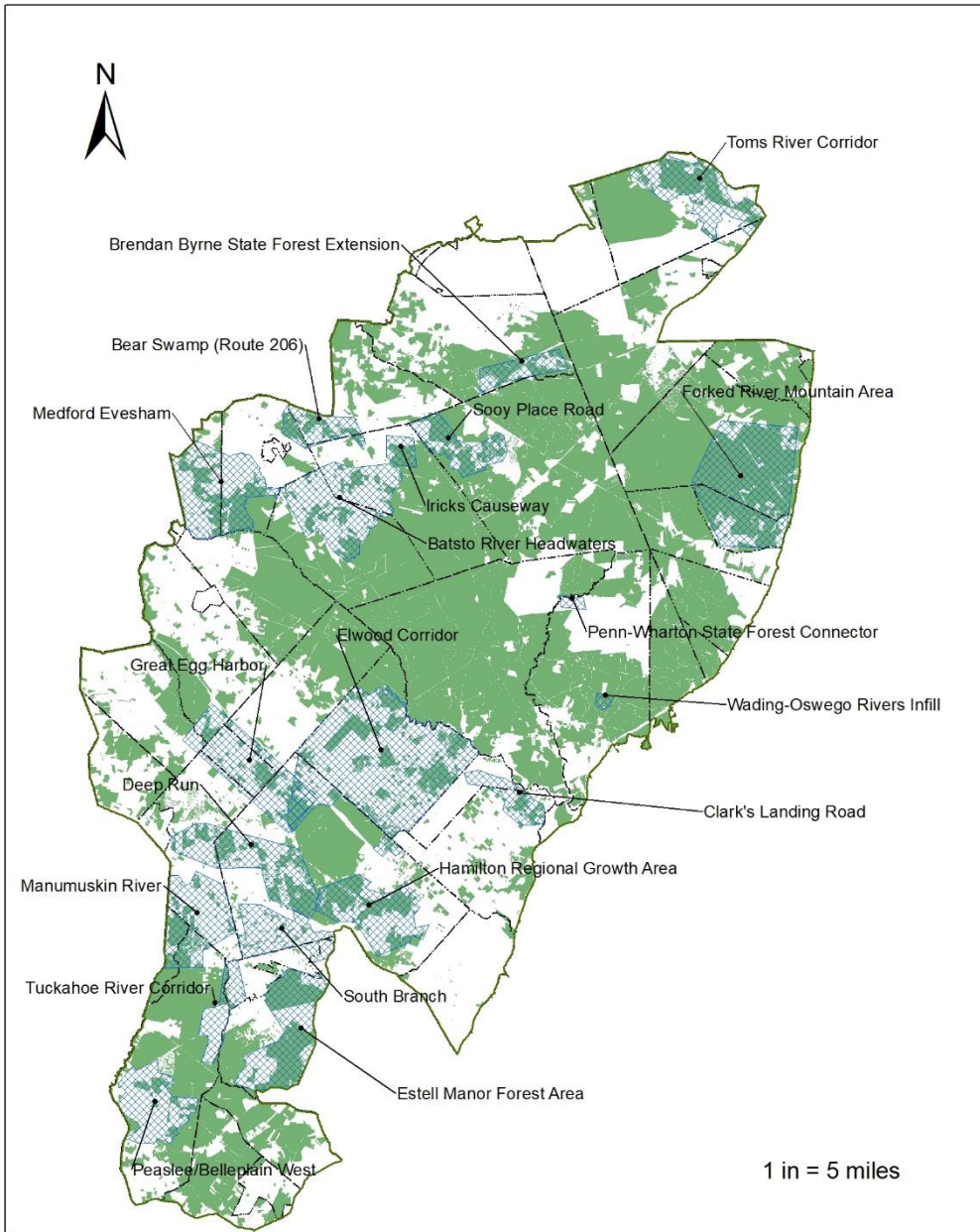
- Increase project participation over recent years' PCF rounds
- Support stronger wetlands buffer protections in corridors identified through Management Area Boundary (Climate Committee) analysis
- Further address environmental justice communities & climate change initiatives

# Other Considerations for PCF Project Evaluation

- Grasslands outside the Focus Area set in 2021
  - Mostly in Agricultural Production Areas
  - May be more appropriately preserved as farmland, not open space
- Continue to assign extra points for carbon sequestration in Atlantic white cedar swamps
  - Based on acreage of cedar

# Permanent Land Protection Schedule (2024)

- Draft amended PLP or PCF Updates -January 2024  
P & I meeting
- P & I Approval of PCF Priorities - February
- Preservation Summit – March
- Open application round ~ late March
- Deadline for submitting proposals ~June 30
- Project Recommendations to P & I ~ September



## Permanently Protected Land in 20 Target Acquisition Areas

Planning Area Name	2023 Preserved Acres	Planning Area Total Acres	% Preserved
Batsto River Headwaters	3893	15858	25%
Bear Swamp (Route 206)	2262	4900	46%
Brendan Byrne State Forest Extension	2284	3796	60%
Clark's Landing Road	1041	3988	26%
Deep Run	5877	13151	45%
Elwood Corridor	11622	38288	30%
Estell Manor Forest Area	7903	13197	60%
Forked River Mountain Area	18977	23201	82%
Great Egg Harbor	4290	14715	29%
Hamilton Regional Growth Area	5588	11038	51%
Iricks Causeway	1038	1731	60%
Manumuskin River	3783	11120	34%
Medford Evesham	5448	14521	38%
Peaslee/Belleplain West	1523	8818	17%
Penn-Wharton State Forest Connector	42	655	6%
Sooy Place Road	3755	6016	62%
South Branch	548	7729	7%
Toms River Corridor	5615	10916	51%
Tuckahoe River Corridor	732	4502	16%
Wading-Oswego Rivers Infill	445	459	97%
<b>Grand Total</b>	<b>86668</b>	<b>208598</b>	<b>42%</b>

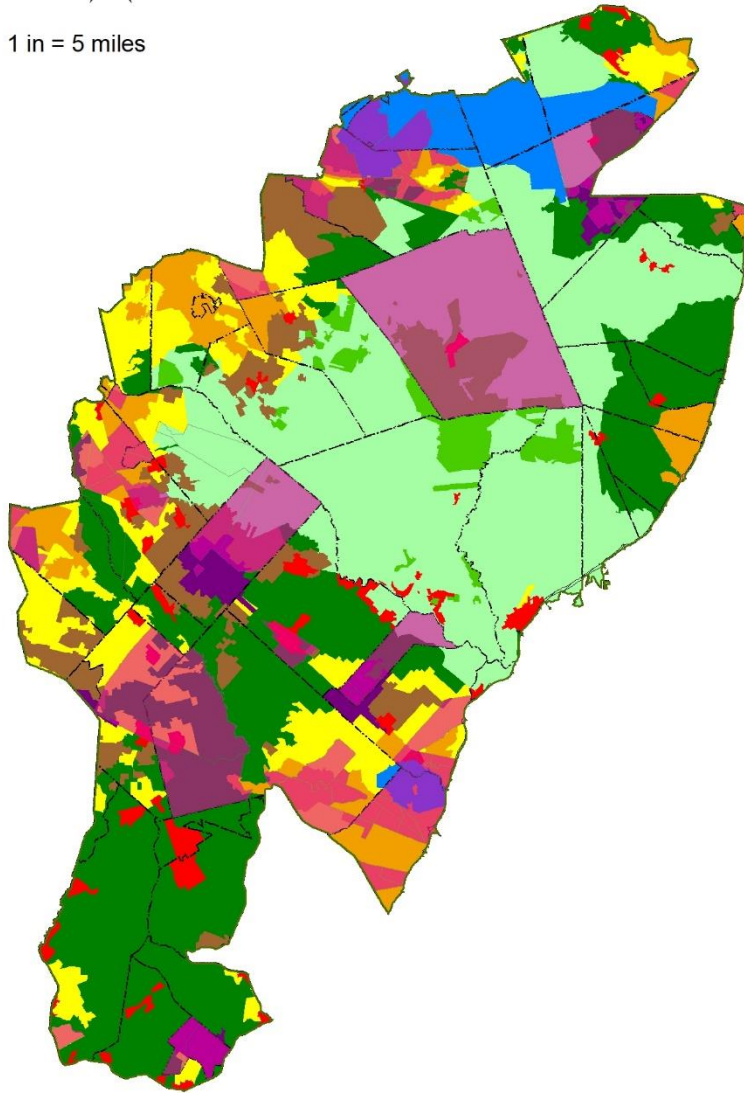
### Legend

-  Pinelands Area Boundary (NJPC)
-  20 Acquisition Planning Areas
-  Municipal Boundaries
-  Permanently Protected Lands

# Environmental Justice Communities with Pinelands Management Areas



1 in = 5 miles



# Environmental Justice Communities with Acquisition Target Areas

